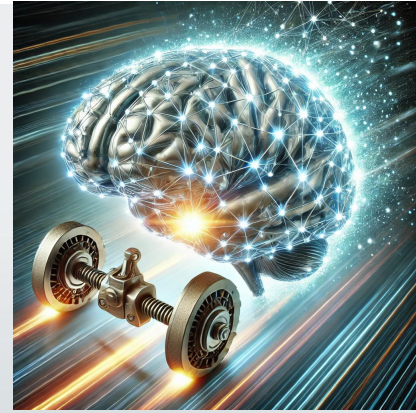




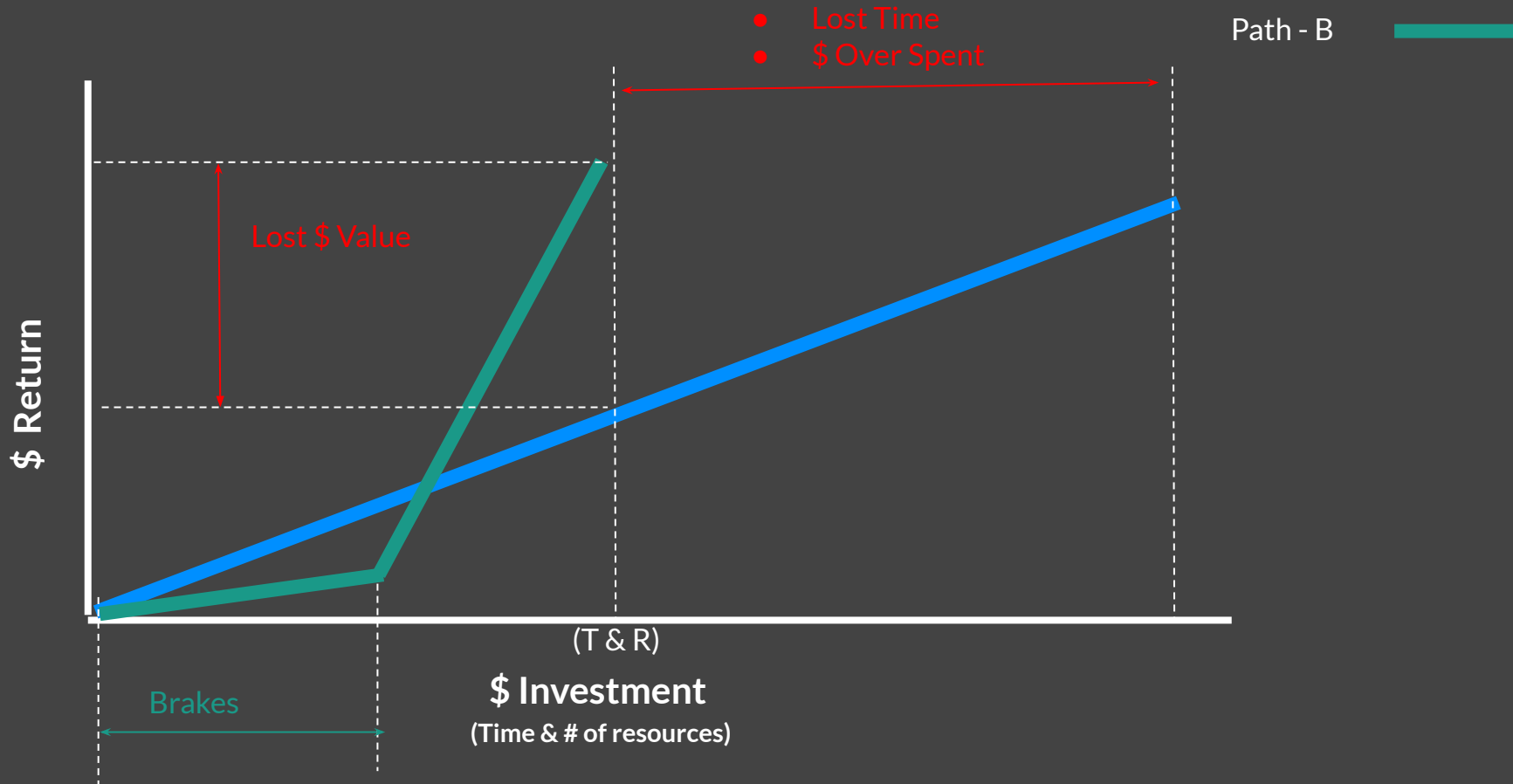
Accelerating the Value of AI

By applying brakes

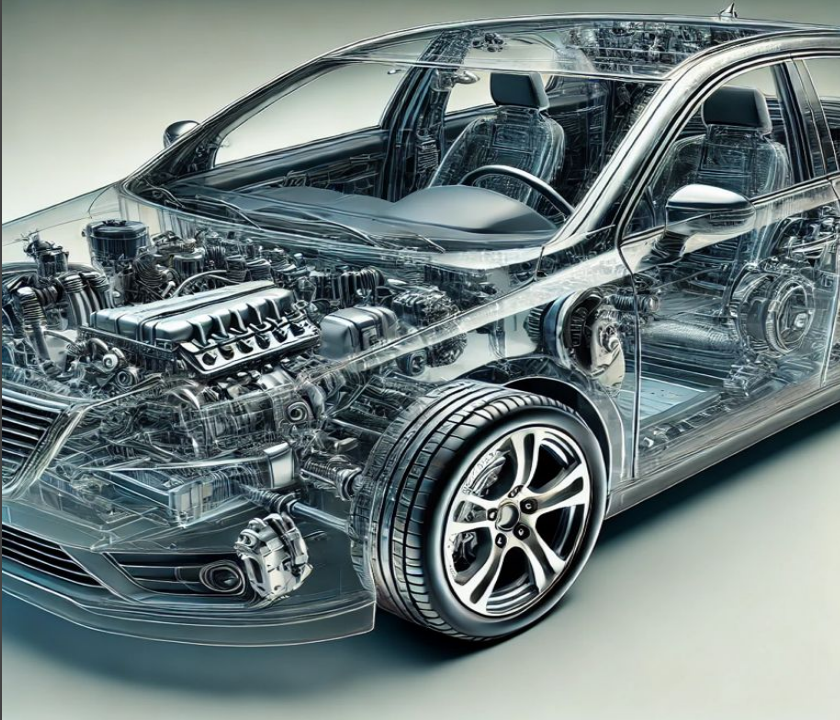
Chandra Kapireddy
Firmwide Head of GenAI, Machine Learning and Analytics



Accelerating the value of AI



Engine & Brakes



Koenigsegg Jesko Absolut:

- **Engine:** 5.0-liter twin-turbo V8.
 - **Horsepower:** 1,600 hp.
 - **Top Speed:** Estimated at 330 mph
-
- **Stopping Distance 62-0 mph:**
Approximately 100 feet.
 - **Stopping Distance 124-0 mph:**
Approximately 410 feet.
 - **Deceleration Force:** Capable of achieving over 1.3g of deceleration during hard braking.

Few powerful engines in the market...



ANTHROPIC



Few powerful braking systems in the market...



Here is the scenario

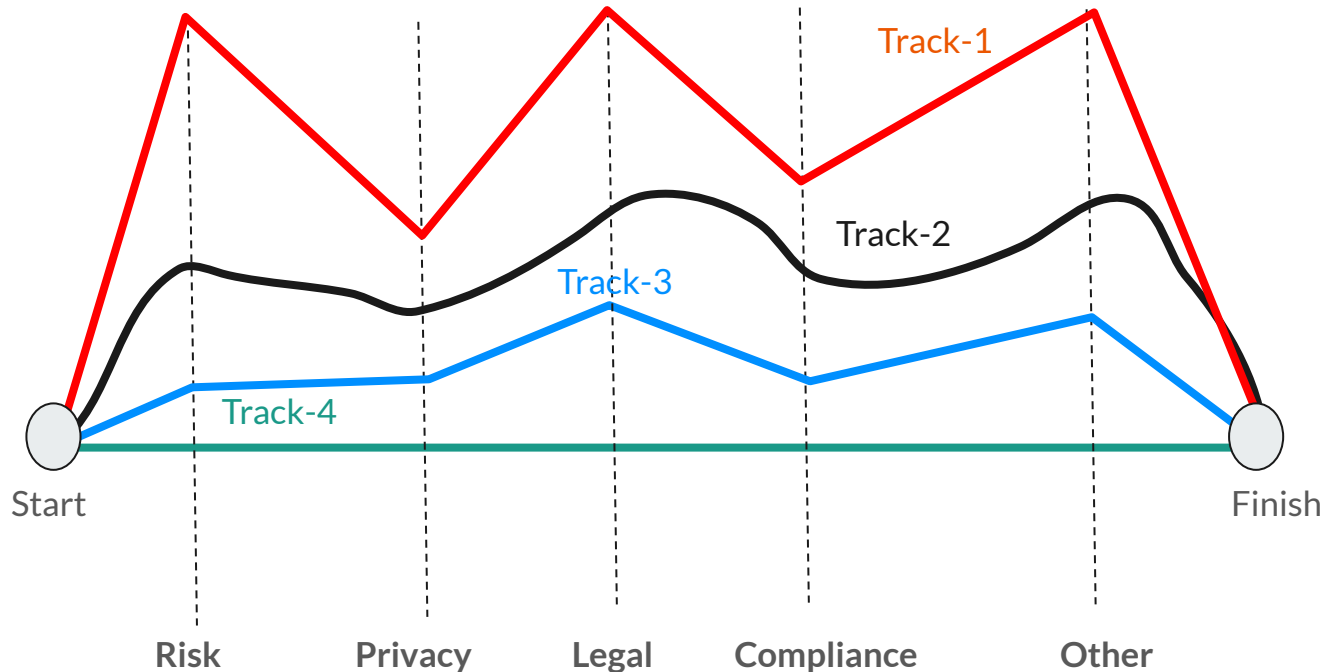


AI Developer

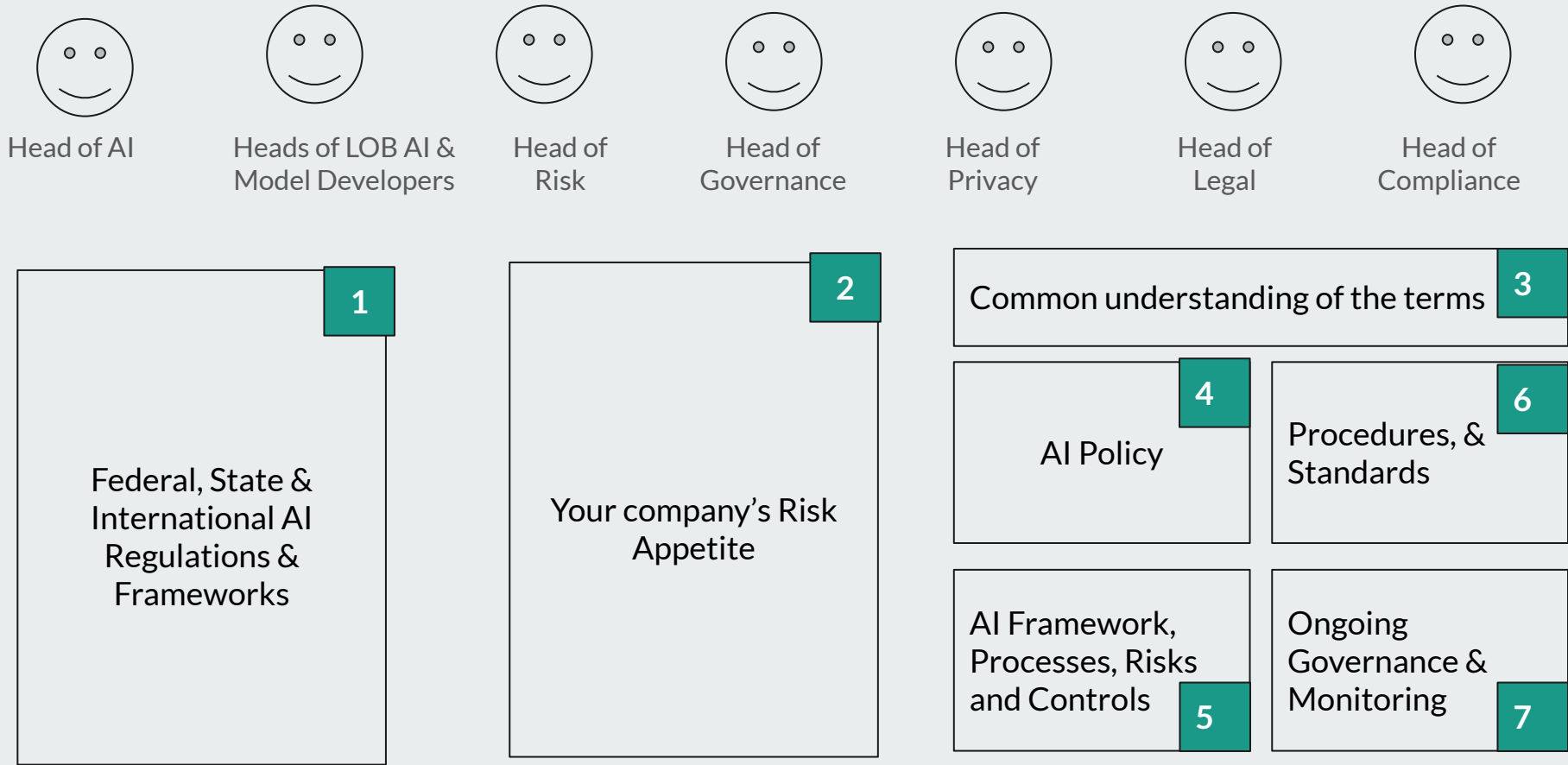
Your track is determined by the risk tier of the AI system you are developing

You have the most powerful engine.

How about the brakes?



Braking System Components & Key Actors





Thank you.

